

Notice

Date	17	06	2010	Time	19	25	Event	AUDI MEDCUP CIRCUIT	Number	10
------	----	----	------	------	----	----	-------	---------------------	--------	----

From	RACE COMMITTEE	To	TP52 CLASS
------	----------------	----	------------

AMENDMENT TO THE SAILING INSTRUCTIONS

APPENDIX 2. COASTAL COURSES

DELETE ALL COURSE NUMBER 3, AND INSERT THE FOLLOWING:

COURSE DEFINITION:

Start- Windward mark and offset (Port)- Leeward gate (Starboard or Port) – Ile Ratoneau and I. du Grand Salaman(Port) – Ile Pomegues (Port)- Ille Tiboulén de Maire (Port) – Les Pharillons (Port) - Illot Les Empereurs (Mandatory Waypoint Gate, Port) – La Cassidaigne Mark (Port)- Variable Mark (Port)- Les Pharillons (Starboard) - Ille Tiboulén de Maire (Starboard)- Finishing line .

SPECIAL MARKS INFORMATION:

Windward mark and offset: before or with the warning signal the race committee will show in a board the distance and bearing from the race committee to the windward mark. The offset mark will be laid at 0.1 NM approximately from the windward mark and the angle with the windward leg axis will be 100°. Both marks will be red inflatable tetrahedron buoys.

Leeward gate: the Race Committee will lay a gate 0.2nm to windward of its position and at the same bearing than the windward mark. Distance between the two red inflatable tetrahedron buoys conforming the leeward gate will be approximately 7 boat lengths (110 meters).

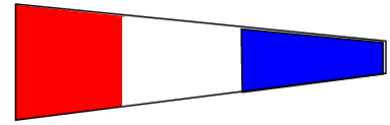
Illot les Empereurs (Mandatory Waypoint Gate, SI.6.2 and 6.6.2): the mandatory waypoint gate will be defined by a staff displaying an orange flag on a committee vessel (to be left to starboard) and the Lighthouse of the Illot Les Empereurs, approximately located at **43°10.160N** and **005°23.660E** (to be left to port).

La Cassidaigne Mark: red inflatable tetrahedron buoy approximately located at **43°08.100N** and **005°32.300E**.

Variable mark: when the first yacht is about to round the Illot Les Empereurs the race committee will show a board with the range and bearing between La Cassidaigne mark and the Variable mark. This information will be broadcasted later on VHF channel 77. The Variable mark will be a red inflatable tetrahedron buoy.

Finishing line: the line between the mast with a blue flag on a Race Committee boat and a red inflatable tetrahedron buoy. The approximate location of the committee boat will be: **43°15.500N** and **005°21.500E**.

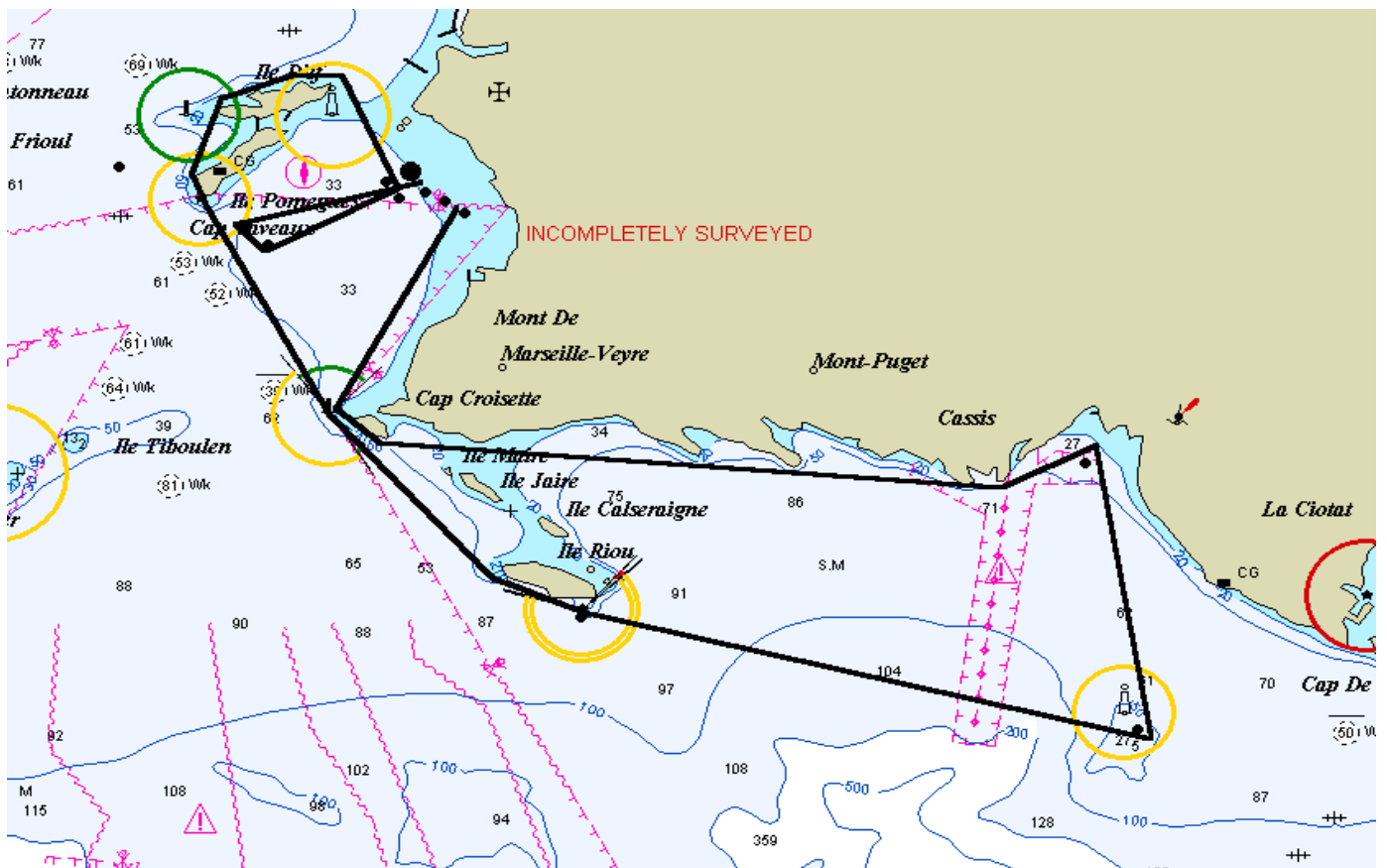
APPENDIX 2. COASTAL COURSES.



Pennant 3

COURSE 3 marks information and course schematic

MARK	ROUNDED	DESCRIPTION	LOCATION
Windward mark & offset	Port	Red inflatable tetrahedron	Rng&Brng from RC
Leeward Gate	Stbd or Port (gate)	Red inflatable tetrahedron	Rng&Brng from RC
Illot Les Empereurs	Port (MWG)	Small rocky sland	43°10.160N/005°23.660E
La Cassidaigne	Port	Red inflatable tetrahedron	43°08.100N and 005°32.300E.
Variable mark	Port	Red inflatable tetrahedron	Rng&Brng from La Cassidaigne



Name

MARIA TORRIJO
PRO

Signature